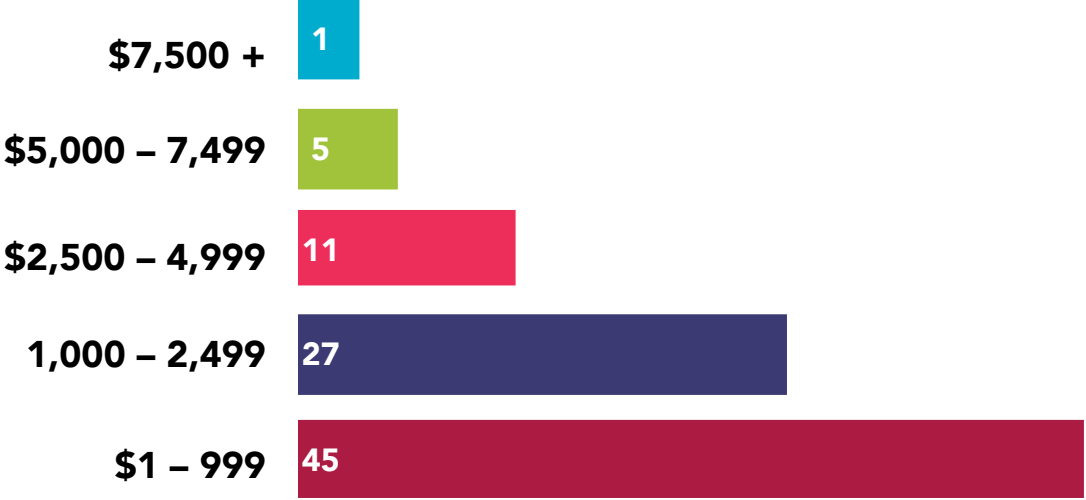


Singing the Journey



Current number of 2016 pledges by amount:



* 6 households requested and were granted waivers for 2016
 * 14 households who did not pledge have made contributions in 2016
 * 6 households who pledged have not yet made contributions in 2016 as of 8/31
 * 14 member households did not pledge or contribute for 2016 as of 8/31

Why a \$145,000 Pledge Goal?

There are so many wonderful ways in which we are engaging in our mission and vision at UUCG. Take a moment to consider the ways this community supports you socially, emotionally, spiritually, and makes a difference in the world.

This Pledge Drive campaign goal is a 5% increase over last year. Increased giving will enable us to expand the many ways we walk towards our vision:

- Music & Worship: Having a new Choir Director in 2017 will open up many possibilities for growing our music and worship programs at UUCG.
- Stewardship; This goal will help us continue growing our capital reserves. Taking care of our sacred space is good stewardship and provides the space for the many ways we connect and serve.
- Programs and Outreach: Most of our program budgets were significantly cut in 2016. Fully funding our shared ministry will move us closer to our vision!
- Personnel: Fully funding salaries and benefits for our minister and staff who support us in creating our beloved community continues to be our goal.

UUCG 2017 Pledge Drive



A radically welcoming sanctuary



in a green space



fostering spiritual growth



nurturing connections & community



It is our deeply held belief and commitment that this be a community of love. We sustain our community through trust, compassion, and inquiry. To live our commitment:

... We hold ourselves, and one another, accountable for doing the work of the church responsibly

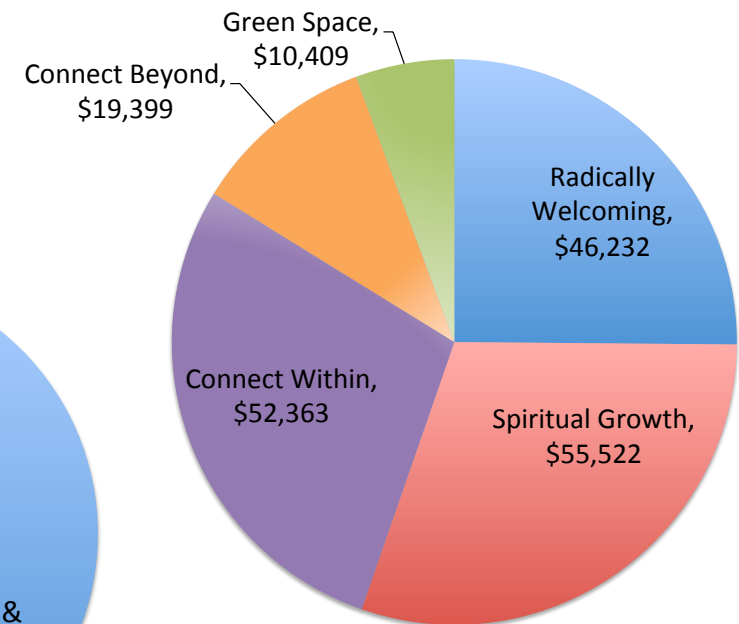
There are many ways we uphold this promise to one another:

- **Participate:** Show up for worship, religious exploration, and congregational events –blend your voice with others
- **Volunteer:** Serve in small and large ways to guide us towards our vision – work in harmony creating Beloved Community
- **Give Generously:** Contribute regularly to fund our vision - every financial gift is a blessed note in our symphony

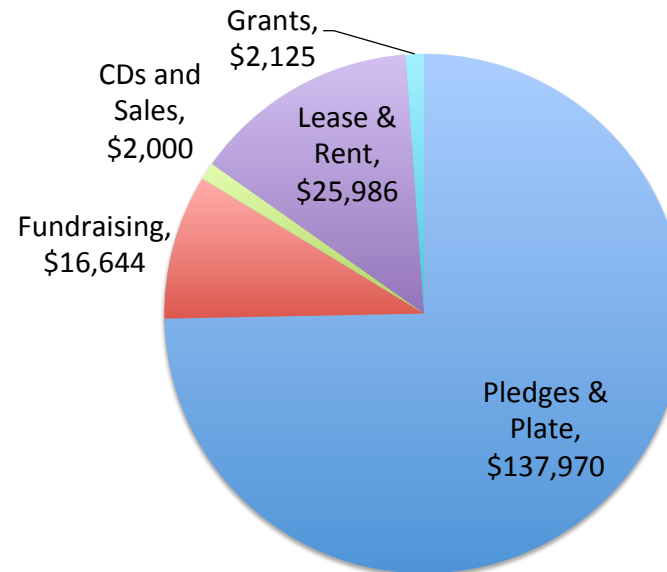
In 2017 we'll be Singing the Journey towards our vision...

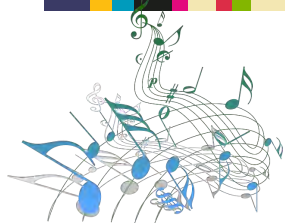
Please consider an even more generous pledge for 2017 to fully fund our shared ministry as we create a model of the Beloved Community within our walls and beyond!

2016 Operating Expenses: \$183,925



2016 Operating Income: \$184,725





Singing the Journey

UUCG 2017 Suggested Contribution Guide

Giving is a function of covenant, commitment and resources. When thinking about your income and your financial commitment to the congregation, please consider your Unitarian Universalist values and our shared covenant to do the work of the church responsibly. Together we are responsible for resourcing our faith and our congregation.

Wherever you find the right level, re-visit it periodically and re-assess whether it's still the right level for you or if you are ready to move to a deeper level of support using the instructions below.

1. Determine your monthly income or resource level based on pre-tax income.
2. ADD any unusual or periodic income such as inheritances, bonuses, business income, investment income, etc.
3. SUBTRACT any extraordinary expenses such as large medical expenses, care of a parent, or large financial expense, etc.
4. From the Adjusted Monthly Income column, or the Adjusted Annual Income column, move to the right to find a giving level that you are ready to support.

Adjusted Monthly Income Range	Adjusted Annual Income Range	SUPPORTER 1 – 5% OF INCOME		SUSTAINER 3 – 6% OF INCOME		VISIONARY 5 – 9 % OF INCOME		TRANSFORMER 10% OF INCOME	
		Suggested % of Income	Monthly Pledge	Suggested % of Income	Monthly Pledge	Suggested % of Income	Monthly Pledge	Suggested % of Income	Monthly Pledge
\$1,000	\$12,000	1%	\$12	3%	\$30	5%	\$50	10%	\$100
\$1,500	\$18,000	1%	\$15	3%	\$45	5%	\$75	10%	\$150
\$2,000	\$25,000	2%	\$40	3%	\$60	5%	\$100	10%	\$200
\$2,500	\$30,000	2%	\$50	3%	\$75	5%	\$125	10%	\$250
\$3,000	\$36,000	2%	\$60	3%	\$90	5%	\$150	10%	\$300
\$3,500	\$42,000	3%	\$105	4%	\$140	6%	\$210	10%	\$350
\$4,000	\$50,000	3%	\$120	4%	\$160	6%	\$240	10%	\$400
\$6,500	\$80,000	3%	\$195	4%	\$260	6%	\$390	10%	\$650
\$8,500	\$100,000	4%	\$340	5%	\$425	7%	\$595	10%	\$850
\$10,000	\$120,000	4%	\$400	5%	\$500	7%	\$700	10%	\$1,000
\$12,500	\$150,000	5%	\$625	6%	\$750	8%	\$1,000	10%	\$1,250
\$17,000	\$200,000	5%	\$850	6%	\$1,020	8%	\$1,360	10%	\$1,700





Unitarian Universalist Congregation of Gwinnett

2017 PLEDGE FORM

Singing the Journey

Our community values every financial gift. Please consider what this community means to you and the difference it makes in your life and in the wider community. Using the Giving Guide on the back of this form, please pledge as your heart guides you and your finances allow.

Achieving our goal of \$145,000 in pledges will allow us to fund our new Choir Director position, restore program funding that was cut in 2016, and increase our reserves for needed building repairs. This goal is a 5% increase in our 2016 pledges. All our contributions make it possible for us to live into our vision of a radically welcoming congregation in a green space, and nurture connections within our walls and beyond.

Knowing not everyone can afford to increase their pledge by 5%, we encourage those who can give more to do so, and those who need to give less to pledge an amount that reaches as high as you are able, even if it is \$5 a month. We greatly value your heartfelt pledge in any amount... every pledge absolutely makes a difference! Together we can make such sweet harmonies as we create a model of Beloved Community.

SUPPORT*

I/We understand that making a financial contribution to the UUCG Operating Fund is part of our covenant to do the work of the church responsibly. Therefore I/we are making a total *annual* commitment of \$_____ for 2017. I/we will fulfill this pledge in equal payments made:

- Weekly Monthly Quarterly One Payment
 Other: _____

Based on the giving guidelines, I/we are supporting UUCG at the following giving level:

- Supporter Sustainer Visionary Transformer

RECOMMIT

During the Annual Budget Pledge Drive, we offer the opportunity to recommit as an active participant in congregational life, or to let us know that you would like to change your status:

- I/We recommit our membership and active participation in the UUCG community
 I/We recommit our active participation in the UUCG community as a pledging friend
 I/We do not wish to recommit to active participation at this time and would like to be removed
 I/We would like to talk with the Minister Board President Other _____
regarding our relationship with the congregation

Name: _____

Address: _____

Signature: _____ Date: _____

* If you need to request a financial waiver for 2017, please contact President@uucg.org or RevTaddeo@uucg.org.

* If your circumstances change during the year and you need to decrease your giving level, please contact the Treasurer at Treasurer@uucg.org.

UUCG's Fiscal Year is January 1 to December 31. Please return completed forms to UUCG by November 1, 2016.